



# Ark Burlington Danes Academy

17.8.21

## ***NHS Test and Trace: COVID-19 testing for staff and students***

Dear parent or guardian,

We are working to keep Ark Burlington Danes as safe as possible. You may have heard that secondary schools have been asked to test staff and students for COVID-19 upon the return to school in September. This will take the form of three lateral flow tests within the first two weeks in September.

Along with the other protective measures we are taking, these tests will help staff and students to remain in school safely. Up to one third of people who have coronavirus experience no symptoms. By testing we will help to stop the virus spread and help to keep our school open as safely as possible. The test is voluntary, but I would encourage everyone to take it.

### **We will be testing all staff and secondary school age students who want to participate when we return to school in September.**

If you are happy for your child to be tested, please fill in the form [here](#) (one per pupil/student). This link is also available directly from our website.

- If you have previously provided consent for testing and wish for your child to be tested, you do not need to provide further consent.
- If you have not previously provided consent and wish for your child to be tested, you should complete the form at the link below.
- If your child is new to Burlington Danes, you should complete the form at the link below.
- If you previously provided consent but would now like to withdraw, you should complete the form, indicating that consent is no longer given

Those taking the test will be supervised by trained staff. The 'lateral flow' tests are quick and easy using a swab of your nose and throat. For under 18s, staff can oversee the swab process.

Results (which take around half an hour from testing) will be shared directly with staff and pupils participating. Where participants are under 16, parents or legal guardians will also be informed.

We know these tests work - in validation studies conducted by Oxford University and Public Health England, they were shown to be as accurate in identifying a case as a PCR test (99.68% specificity). The tests have lower sensitivity but they are better at picking up cases when a person has higher viral load, hence the need to test frequently.

Testing will be offered free of charge.

### **What if a pupil tests positive?**

Participating staff and pupils who test positive will be informed about their results individually. Where participants are under 16, parents or legal guardians will also be notified. Guidance on safe travel and additional precautions will be provided along with test results.

Pupils will need to take a further 'PCR test' (similar to those done in local and regional testing sites) on the same day (or as soon as possible). Burlington Danes Academy will be able to provide these PCR test kits to perform at home or you can go to [www.gov.uk/get-coronavirus-test](http://www.gov.uk/get-coronavirus-test) or call 119 to book a follow-up test. If ordering a PCR test yourselves, you should choose to visit a drive-through test site if possible, as it is faster than requesting a home test.

**Ark Burlington Danes Academy**

Wood Lane London W12 0HR

T +44 (0)20 8735 4950 F +44 (0)20 8740 5659

[burlingtondanes.org](http://burlingtondanes.org)



# Ark Burlington Danes Academy

During this time while they wait for the PCR result (via text / email) they will need to self-isolate.

If the PCR test returns a positive result you will have to self-isolate and follow the guidance from NHS Test and Trace.

## **What happens if the test is negative?**

Students/staff who receive a negative result will be able to stay in school and resume their activities as normal. A pupil will only be told if they test positive on a 'lateral flow' test, so if you do not hear you can assume it was negative. A small number of pupils may need to repeat the test if the first test was invalid or void for some reason.

## **What if a close contact at school/college tests positive?**

A close contact of someone in school/college who has tested positive for COVID-19 will not need to self-isolate as per the national guidelines.

## **What if my child develops symptoms?**

This testing programme at Ark Burlington Danes Academy is for people with no symptoms. If your child develops symptoms at any time (such as a high temperature; a new, continuous cough; or a loss or change to their sense of smell or taste) they must immediately self-isolate, and book a test by calling 119 (England, Wales and Northern Ireland) or 0300 303 2713 (Scotland) or visiting <https://www.gov.uk/get-coronavirus-test>.

We will support our staff and pupils throughout, but please contact us if you need this information in any other language or format or if you have any questions. You can call the office on 0208 735 4950 or email [bda.school@burlingtondanes.org](mailto:bda.school@burlingtondanes.org)

Yours faithfully,

Paul Bhatia

Principal

**Ark Burlington Danes Academy**

Wood Lane London W12 0HR


T +44 (0)20 8735 4950 F +44 (0)20 8740 5659


[burlingtondanes.org](http://burlingtondanes.org)





## HOW TO DO YOUR TEST

WHILE THIS IS A SELF-SWAB TEST, THERE WILL BE A TESTING HELPER WHO WILL OVERSEE THINGS AND PROVIDE HELP IF YOU NEED

- 

**1** YOUR COVID-19 TEST WILL BE SCHEDULED. IF YOU ARE UNDER 16, YOUR PARENT / CARER WILL HAVE CONSENTED
- 

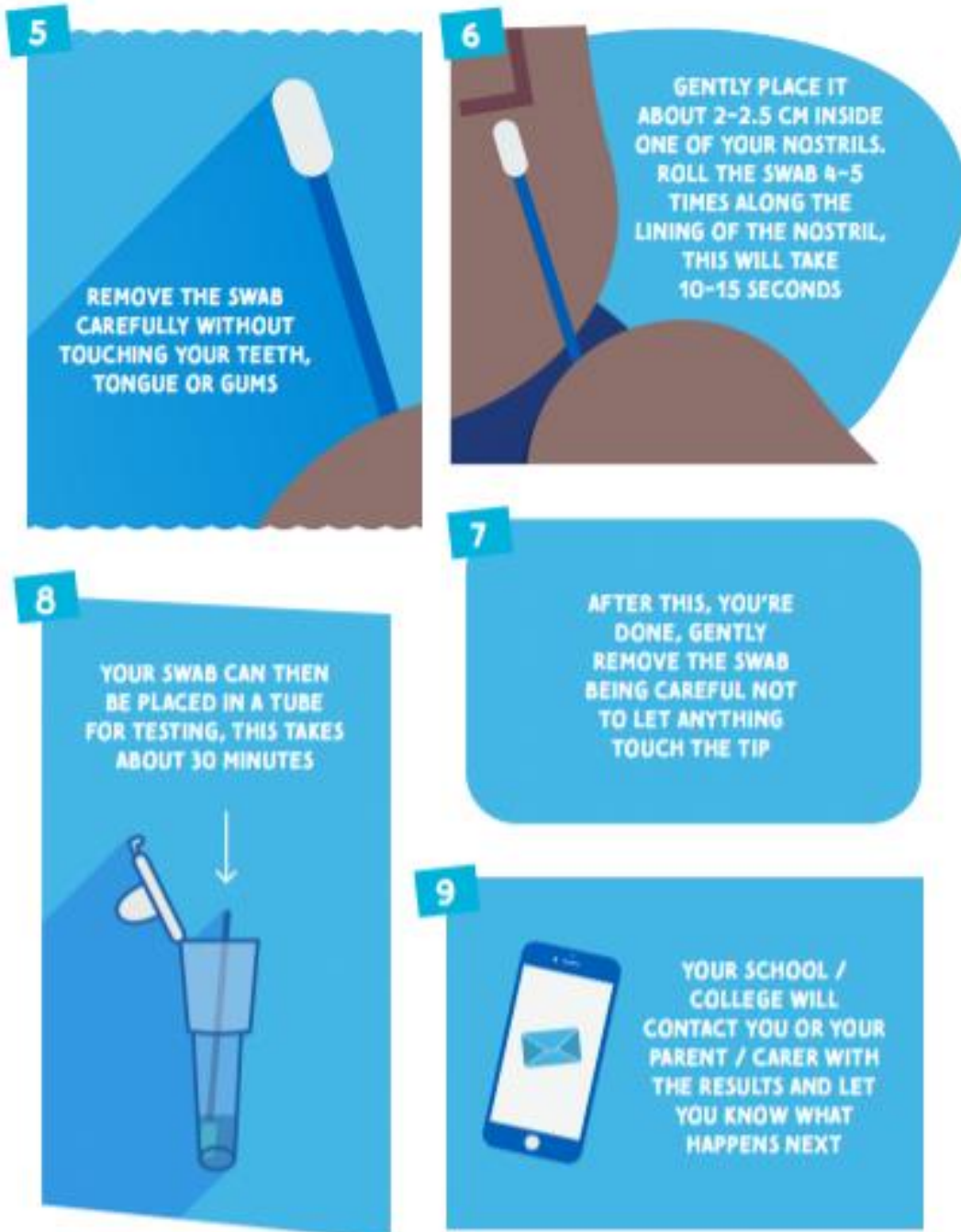
**2** YOUR TEST WILL BE FAST AND WHILE IT MIGHT FEEL A LITTLE UNCOMFORTABLE, IT WON'T HURT YOU
- 

**3** BLOW YOUR NOSE IF NEEDED. WASH AND DRY/SANITISE YOUR HANDS. REMOVE THE SWAB BEING CAREFUL NOT TO TOUCH THE SOFT PART
- 

**4** OPEN YOUR MOUTH WIDE AND USE A MIRROR TO LOOK AT THE BACK OF YOUR THROAT, THEN USE THE SWAB TO RUB FIRMLY 4 TIMES ON EACH SIDE



# Ark Burlington Danes Academy



**Ark Burlington Danes Academy**

Wood Lane London W12 0HR

T +44 (0)20 8735 4950 F +44 (0)20 8740 5659

[burlingtondanes.org](http://burlingtondanes.org)