

Contact Us

Shanae Cox[Manager]

shanae.cox@p3charity.org

Phone: 07875724328

P3 Play Centre

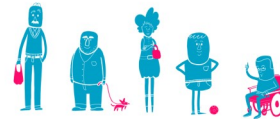
ARK Burlington Danes

Wood Lane,

W12 0HR

Complaints, Suggestions & Comments

P3 Play services value any suggestions and comments you would like to make. Please ask a member of our team for a questionnaire sheet and leave your comments with the play team. We will be happy to hear from you.



P3 Play 3
221 Walmer Road
London
W10 4EY

Head of Children's Services

Riley Taggart

riley.taggart@p3charity.org

02073135272

07805834851

Play Development Manager

Linda Cox

linda.cox@p3charity.org

02073135273

07875724227



People Potential Possibility

Burlington Danes After School Play Centre



Our Play 3 Service



Play 3 provides after school and holiday play services in many London Primary Schools. We employ professional, qualified and caring staff. We deliver activities for children and young people from 4 to 14 years and provide safe play environments that aim to support each child to learn and develop socially, physically, intellectually, creatively and emotionally.

We believe it's extremely important from an early age for children to have opportunities to take part in regular activities which are both adult-led and child-led in order to be healthy, to have fun and to learn new skills. We provide opportunities that are inclusive and deliver an array of sports, arts and crafts, dance, games, cooking, and free play opportunities.

Our service aims to be financially sustainable and flexible to meet the needs of all parents especially those who are in employment or full-time education studies. We cater for one-off bookings, emergency bookings and regular days.

P3 Believe;

"Children have the right to relax and play, and join in a wide range of cultural, artistic and other recreational activities"
Article 31 of the UN Convention

Our Prices

Term-time (subject to change)

Full Rates **£8.00 per day per child**

After club rate **£4.00 per day per child**

To help us maintain a sustainable service please can you pay your fees on the day or in advance.

Every child is provided with a healthy snack which includes fresh fruit and water. Play centre runs between **4:00pm-6:00pm Mon-Thurs and Fridays 2:30pm-4:30pm**

Holidays & Inset (At ARK ATWOOD ACADEMY)

Holiday opening times are between 8:00am-6:00pm. You will need to provide a pack lunch. Please EMAIL Linda Cox (details on the back).

Please ensure you arrive on time to collect your child. There is a **£10** charge for lateness.

Our Unique Reference Number (URN) is: 140096

For a registration form please see:-

Play Manager between 4:00pm-6:00pm (Mon-Thurs)

Our website:-www.p3charity.org

Our link on schools website

Ways To Pay

On site card payments-Contactless payments

Online payments <https://pay.p3charity.org>, book a play session then choose your play centre from the drop down box etc. Note: up to 10 sessions can be booked at any one time.

Vouchers from Edenred, Kiddivouchers, care-4, computer share, Sodexo, Fidelity and kidsunlimited (we can set up accounts with new providers)

Bacs Transaction Lloyds TSB, Account name, people potential possibilities t/a p3,

Account Number : 001 89 869

Sort Code : 30-90-82.

PLEASE ensure you reference the play centre and your child's first name so that we can match up the payment to the centre. There are no refunds for fees

Activities

Sports- Football, Cricket, Tag-Rugby, Basket Ball & Netball

Arts/Crafts- Painting, Junk Modelling, Puppet Making, Jewellery Making.

Dance- Street Dance, Musical Games, Movement

Homework Club- Numeracy, Literacy & Reading

ICT- Games, Music & Creative Art

Cooking- Healthy Eating, Cultural Awareness, Baking.

Fitness Challenge- Assault Course, Mini Gym.

Competitions- Sports, Arts, Fitness

Children's Forum- Expressing views and ideas.